

まっふる

特別編集

福生

TAKE FREE English

# FUSSA

Special  
Feature

Local  
gourmet

Fussa Dog



Fussa Gourmet:  
Enjoy the  
Wide Variety



Birth to  
Happiness



Three great

walking courses

- 1 Base Side Street
- 2 Waterside and Japanese Culture Walking Course
- 3 History and Nature Walking Course

Two historic sake breweries





# Fussa: It's Got So Much to Offer!

Fussa City is located in the western part of Tokyo. The city is unique in the sense that it is home to Yokota Air Base, a U.S. military base—and a distinctly American atmosphere in many of the area's cafes and shops—it's a little like a foreign country here! The natural Tamagawa Aqueduct area is another of the city's many attractions.

## Fussa City data

[Surface area]

10.16km<sup>2</sup>

[Population]

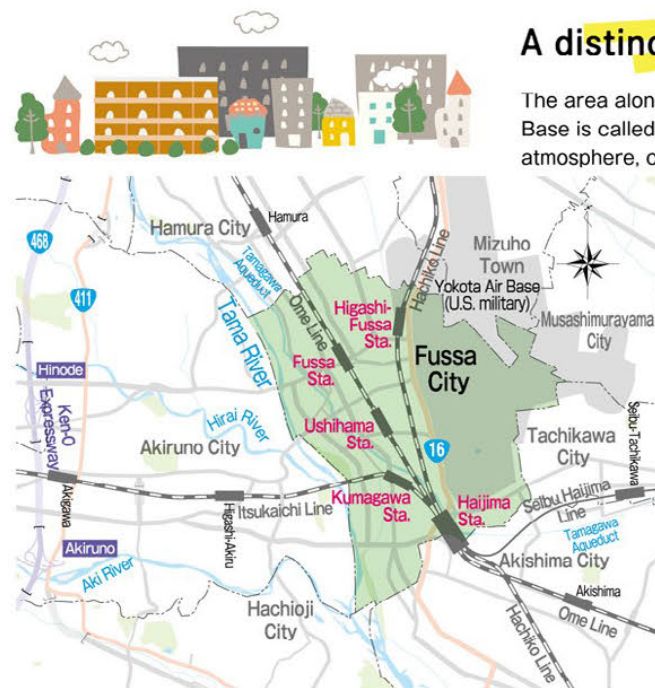
Approximately  
56,000

Visit us for a  
great time!



Fussa City  
official character  
TAKKE☆☆

TAKKE☆☆ is  
a bamboo fairy  
who appears  
everywhere.  
He gives  
high-fives to  
make  
everybody  
happy!



## A distinctly American feel

The area along National Route 16 adjacent to the Yokota Air Base is called the "Base Side Street." It has a very American atmosphere, complete with good food options and shopping.



## Fussa has two sake breweries

Blessed with pure water, Fussa is an ideal spot for sake brewing. The city has two breweries operating since the Edo Period. Tour a brewery or take a walk in the area.



## A rich natural environment

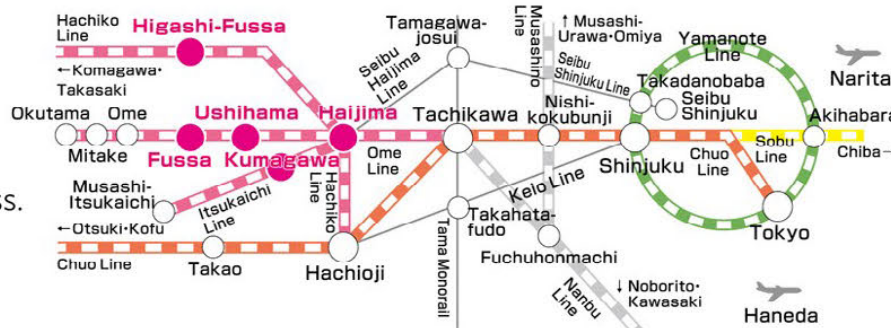
Thanks to its gently flowing stream terrace topography, along with the ample waters of the Tama River and Tamagawa Aqueduct, the area is a habitat to numerous animal and plant species.



## Access from the city center

Fussa Station is 46 minutes from  
Shinjuku on the JR Chuo Line Ome Express.

If you miss the Express, you can also transfer at  
Tachikawa Station. The trip is about one hour including  
wait time.



How to view icons    📍Address    ☎Telephone number    🕒Hours    📅Days closed/Regular day(s) closed  
🎫Admission    🚗Transport access    🅇Parking

These data are as of May 2023. Please confirm ahead of time in case there have been schedule changes. We are unable to take responsibility for problems or damages caused by the data. Thank you for understanding. As for shops' business hours and opening hours, we reported them according to the time of their last orders or the time of last entry. According to shops' holidays, we indicate only their regular holidays except special holidays, the Bon holidays, and the New Year's holidays. In general, prices indicated include taxes unless otherwise noted.

## Fussa Event Calendar

\*Dates may change depending on the fiscal year.

	Events	Date of event	
Spring	Fussa Cherry Blossom Festival	The approximately 2.5 km of cherry blossom trees adorning the embankments of the Tama River are a prime flower-viewing spot of Fussa. Large crowds of visitors descend upon the gently-curving line of trees during the flower-blooming season.	Late March–early April
	Fussa Environment Festival	This festival features local environmental group exhibit panels and food stands. There is also dancing and other shows on the stage.	Mid-June
	Fussa Firefly Festival	Watch the dance of the fireflies along the waterfront of the Tamagawa Aqueduct. At the Fussa Firefly Festival, visitors can also witness the Genji Firefly, which was cultivated by the Fussa Association for Fireflies Research.	Mid-June
Summer	Fussa Tanabata Festival	This very lively event draws some 400,000 people very year. The Tanabata decorations made by local shops and organizations are even more beautiful lit up at night.	Early August (Held July 2023)
	Yokota Air Base Japanese-American Friendship Festival	All are welcome on the base on this special occasion. There is an airplane exhibit, performances by Japanese and American bands, hotdog stands, and more.	Mid-September (Held in May in 2022 and 2023)
Fall	International Fair	This festival is held along the Base Side Street. Enjoy the many events and roadside stands.	Early November
	Fussa public Sake-tasting festival	The Fussa City Society of Commerce and Industry holds a local sake PR event at Tamura Shuzojo brewery and Ishikawa Brewery. The event offers tours of the brewery facilities as well as foods that go well with sake.	Early November
Winter	Fussa Winter Illumination	In December, the different areas of Fussa City are decorated with gorgeous light displays, which last from sundown to the middle of the night (times vary depending on the location).	Early December–early January



🌸Fussa Cherry Blossom Festival



✈Yokota Air Base Japanese-American Friendship Festival



👉Fussa Firefly Festival

**PICK UP!**  
A proud history of this dynamic event of 70-plus years  
**Fussa Tanabata Festival**



Held 70-plus times since 1951, this is the Nishi-tama area's largest festival. Bamboo and other decorations made by various groups, primarily around Fussa Station and Ushihama Station, add some fun to the area. There are also lots of booths with an international flavor.

## Fun Facts about Fussa City

TAKKE☆☆ will tell you all about it!



### Majestic Mt. Fuji can be seen from various places in the city!

Mt. Fuji can be seen from the terraces along the Tamagawa Aqueduct, such as from the Shuku Bridge area.



### There's a radio station on Yokota Air Base.

The AM810 channel AFN (formerly FEN) is a radio station established subsequent to World War II by the GHQ for American soldiers and their families. Japanese are familiar with the station for American music and for the chance to listen to native English.

### Topography of cliff line and springs



The river terraces going toward the Tama River from the east side of Fussa City are dotted with springs. The Shimaya no Taki Waterfall has the largest volume of spring water amongst springs located in the city.



### A rock-and-roll town that draws lots of artists

Fussa was a center of 60s and 70s culture. Numerous popular bands including JUN SKY WALKER(S), ZIGGY, and more got their start at Live Music Cafe UZU.

### Fussa has served as a location for numerous movies and TV dramas.

Fussa is used as a set location for commercials, dramas, and movies. The Tea House Fukuan has been featured in movies, while the Ishikawa Brewery can be seen in television dramas.



### A famous gourmet chain started here

The first Kiwa Corporation restaurant, a chain with many locations around the nation, was launched in Fussa. Fussa is home to many eateries affiliated with popular restaurants such as *nira manju*. The flagship store of Okonomiyaki Dohtonbori, which originated in Fussa and has branches around the country, is also still located in Fussa.





# Three Recommended Fussa Area Walking Courses

Enjoying Fussa to the fullest

Course

1

## Base Side Street course

- Walking distance: Approx. 4 km
- Time required: Approx. 55 minutes
- Tour times: Approx. 1 hour and 45 minutes
- Walking course time: Approx. 2 hours and 40 minutes

The area around National Route 16 alongside Yokota Base Side is lined with shops and restaurants reminiscent of another country.



## A Take in a retro-American atmosphere Fussa American House

This house, built in 1958 for U.S. military personnel, is very close to the original. After the military family who lived in this three-bedroom home departed, Japanese people took it over and lived there for a long period. Fussa City and shopping streets associations have collaborated to repair and preserve the property, recreating the atmosphere of the 1950s.

- 2476-1 Fussa, Fussa City
- 042-513-0432
- 11:00~17:00
- Monday~Thursday
- Free of charge
- 10 minutes' walk from JR Ushihama Station
- No parking

MAP P.16 C-2



- Photos and other materials are on exhibit inside.
- In 2014 the municipality decided that the property would be preserved.



## B A cute cafe reminiscent of an American motel The MINT MOTEL

The MINT MOTEL's exterior mint tone and colorful vintage furniture of the 1950s make for great photos! Customers also take pictures of their American-style breakfast menu and homemade cupcakes, which people love to see! The motel shop also sells some fashionable original items, such as t-shirts, tableware, etc.

- 2477 Fussaninomiya, Fussa City
- 042-513-3317
- 10:00~16:30 (Saturdays, Sundays, and holidays until 17:30)
- Open daily year-round
- 10 minutes' walk from JR Ushihama Station
- Parking available

MAP P.16 C-2



- The bench in front of the shop: a popular spot for photo-taking
- The furniture was bought by the owner in the U.S.
- Waffles made with waffle makers imported from the U.S. ¥770
- Cream soda (melon) ¥700



Colorful cupcakes made with lots of Hokkaido butter ¥550



Course

1

Start	Fussa Station
1km / Approx. 14 minutes	
GOOD KING'S	
900m / Approx. 11 minutes	
BLUE SEAL ICE CREAM Fussa Store	
130m / Approx. 2 minutes	
Fussa American House	
230m / Approx. 3 minutes	
The MINT MOTEL	
500m / Approx. 7 minutes	
DEMODE DINER Fussa	
1.2km / Approx. 15 minutes	
Goal	Hajima Station

## C An American-style cafeteria with hearty portions! DEMODE DINER Fussa

This restaurant is modeled after the American-style diners of the 1950s-60s. Upbeat American pop music can be heard as customers enjoy bean chili and hotdogs, pancakes, and more. The portions are American style, too! The hamburger with their in-house pate and special spice mix is especially popular! They also recommend apple pie, parfait, etc. for dessert.



- The terrace is open for dogs, so feel free to come in with your best friend! At night, neon lights create a relaxing ambience.
- A pop-culture look that feels like you've wandered into an American movie!
- 1121 Kumagawa, Fussa City
- 042-530-6614
- 11:30~21:00 (Fridays, Saturdays, Sundays, and holidays until 21:30)
- Open daily year-round
- 15 minutes' walk from JR Ushihama Station
- Parking available

MAP P.16 C-3



This place is known for its "big tower" burger—for sharing between two to four people ¥6,500

How to view icons Address Telephone number Hours Days closed/Regular day(s) closed Admission Transport access Parking



If you get hungry on your walk, stop in at one of the great food spots along the way and choose from the American-style menu! Enjoy the atmosphere along with the food.

Fussa has many different shops selling miscellaneous American goods and clothing, as well as antique furniture.



An ideal place for finding the perfect gift!

## D Many visitors come from the base Fresh Bagels Café Hoop

Visitors feel like they're in the U.S. at this bagel specialty store offering chewy bagels. In addition to the café menu that includes bagel sandwiches, soups, and more, there are approximately 29 types of bagels available for takeout. They make great gifts! The Fussa Dog is also available here. (→ P. 15)



The interior décor features wood everywhere

2475 Fussa, Fussa City  
042-530-8877 8:00~17:30  
Mondays (closed on occasion)  
10 minutes' walk from JR Ushihama Station  
Parking available  
MAP P.16 C-2



Big-volume chicken and egg sandwich with teriyaki sauce ¥930  
Bagels for takeout: ¥200-

## F Authentic American pizza Pizza & Italian Restaurant NICOLA Yokota flagship store

Choose from their highly recommended Mixed Pizza, or their Plain Pizza—for which you can choose your toppings. In addition to pasta, they also offer many other menu items including steak.



Live music on Sundays

2402 Fussa, Fussa City  
042-551-0707 11:00~21:00  
Tuesday and the first Monday of the month (open on holidays, closed the next day instead)  
12 minutes' walk from JR Ushihama Station  
Parking available  
MAP P.16 C-2



Nicola Mix Pizza with tomato sauce and gouda cheese: ¥1,180 (small)-

## E This unique ice cream was born in the U.S., raised in Okinawa BLUE SEAL ICE CREAM Fussa Store



They offer approximately 30 regular flavors, ranging from the popular standards to Instagram-worthy colorful varieties—as well as seasonal flavors, plus parfaits and even sundaes.



The restaurant has ample space for customers to sit down and eat.

The sign is recognizable even from far away.

2475 Fussa, Fussa City  
042-551-0539  
11:00~22:00  
Open daily year-round  
10 minutes' walk from JR Ushihama Station  
Parking available  
MAP P.16 C-2



Their classic Strawberry (right), and Blue Wave (left), a summer favorite. Single ¥420

## G Big-portion meat dishes CHACO's FUSSA

Menu options include mostly steak and hamburger. In addition to Japanese wagyu beef, meats include various kinds of U.S. and Australian beef. Their list of five sauces features in-house onion and teriyaki.



Terrace seating available

2264-4 Fussa, Fussa City  
042-530-0160  
11:30~14:30, 17:00~21:00 (Fridays until 21:30)  
Saturdays, Sundays, and national holidays, 11:30~21:30  
Open daily year-round  
5 minutes' walk from JR Higashi-Fussa Station  
Parking available  
MAP P.16 C-2

Hamburger combo featuring a charcoal-grilled hamburger with U.S. premium roast: ¥2,300



Image is based on California housing of the 1950s



All vintage bowling shirts are one-of-a-kind



The shop is marked by the fluttering American flag on the Base Side Street.

## H Head to the used clothing shop if you feel like looking for a treasure!

### GOOD KING'S

The owner has good fashion sense, and it shows in the shop's array of jeans, aloha shirts, shoes, accessories, and more. Their sister shop, GOOD KING'S SQUADRON, sells U.S. military release items.

2172 Fussa, Fussa City  
080-1195-3148  
13:00~20:00 (Saturday and Sunday from 12:00)  
Open daily year-round  
4 minutes' walk from JR Higashi-Fussa Station  
No parking  
MAP P.16 C-2



Purchasing of used clothing such as jeans and leather jackets

Replicas of emblems worn by members of the U.S. military during the Vietnam War ¥1,280 each

## I Retro furniture DEMODE FUKUNAKA

This shop is decorated in the Japanese aesthetic. You'll find that the restored furniture has a great deal of character, and that it stands up to use-and-abuse. It also offers easy-to-take-home items such as retro metal fixtures, dishware, and more. There's even a diner! (→ P.5)



Lots of attractive furniture to choose from



Look for the red windmill!

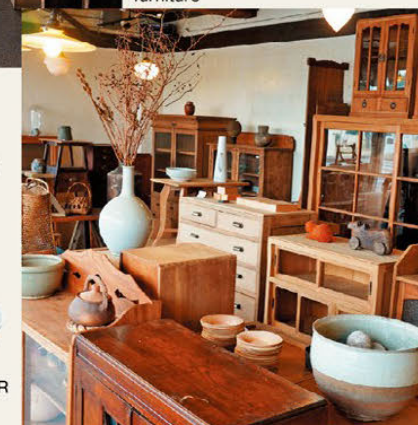
Meticulously restored Japanese furniture



Basket crafted of akebi vine: ¥8,000

White porcelain bowl: ¥800

1148-4 Fussa, Fussa City  
042-553-3981 11:00~20:00  
Open daily year-round 15 minutes' walk from JR Ushihama Station  
Parking available  
MAP P.16 C-3



## J Variety goods purchased in the U.S. BIG MAMA

This shop offers tons of miscellaneous antique goods from the 1950s and 60s. The owner purchases directly from the U.S., and most of the items are not available in Japan. The selection includes numerous interior decorating pieces, Fire King glassware, and more.



Fire-King mug

Look for the giant cola bottle!



Harlequin-motif wall decorations from the 1950s

2485-1 Fussa Ninomiya, Fussa City  
042-513-7897  
11:00~17:00 (Saturdays, Sundays, and holidays until 18:00) Thursday 8 minutes' walk from JR Ushihama Station  
Parking available  
MAP P.16 C-3



Lots of pop art pieces everywhere



## Course 2 Recommended Fussa area walking courses

### Waterside and Japanese Culture Walking Course

- Walking distance: Approx. 3 km
  - Tour times: Approx. 2 hours and 15 minutes
  - Time required: Approx. 35 minutes
  - Walking course time: Approx. 2 hours and 50 minutes
- Fussa actually has a number of spots where people can experience the real Japan. This walking course features sake breweries, temples and shrines, as well as mellow Japanese culture and waterfront areas of the Tamagawa Aqueduct. It's a healing experience.

#### A 200-year-old brewery facing the Tamagawa Aqueduct Tamura Shuzojo

This brewery provided the famous Tokyo-brand sake, known as Kasen, which was served at a dinner party for world leaders at the Tokyo Summit. It was established in the late Edo Period, in 1822. The spacious grounds are home to historical buildings registered as cultural properties. In 2016, the emperor and empress at the time took a rest in one of these buildings.



A monument commemorating a visit by the then emperor and empress



Junmai daiginjo: 1,800ml, ¥11,330



The Tamagawa Aqueduct runs right alongside the grounds

Junmai ginjo: 1,800ml, ¥3,410



Tour the inside of the brewery as well (reservations required)

A water wheel hut serves on a corner of the spacious garden. Many buildings with brick chimneys and white walls are registered as cultural properties.



Products are available for purchase at the office. Kasen, a famous sake of the Tamura Shuzojo brewery, comes in everything from regular sake to top-quality daiginjo.

Special honjozo Maboroshi no Sake: 1800ml, ¥2,310

#### B Bringing visitors the atmosphere of the Meiji Period Former Residence of Yamaju-Tamura Family

This traditional Japanese home is situated on the Shukubashi-dori Street, the old main street of the area. It was built in 1902 for a branch family of the Tamura Shuzojo brewery. It is a spacious wooden single-story house of approximately 270 square meters. With a hallway encircling six rooms, the construction is typically Japanese. An invaluable example of Meiji Period architecture, it is registered as a nationally recognized intangible cultural asset. Open to the public.



Tour the house



Lived-in through 2012  
The storehouse in the back is also a registered cultural property.

1158 Fussa, Fussa City 042-530-1120 (Museum of Fussa Local History, Folklore & Nature) 10:00~16:00 Mondays (the next day where a holiday falls on a Monday) Free of charge 7 minutes' walk from JR Fussa Station Parking available

MAP P.16 A-2

### Course 2

- Start** Fussa Station
- 550m / Approx. 7 minutes
- Former Residence of Yamaju-Tamura Family**
- 300m / Approx. 4 minutes
- Tamura Shuzojo**
- 100m / Approx. 1 minute
- Chotoku-ji Temple**
- 650m / Approx. 9 minutes
- Tamagawa Aqueduct (near Shinbori Bridge)**
- 800m / Approx. 10 minutes
- Fussa Shinmei-sha Shrine**
- 600m / Approx. 7 minutes
- Goal** Fussa Station

#### C Gorgeous gardens throughout the year Chotoku-ji Temple

This temple has a history of more than 1,000 years. From the graveyard in the back of the Main Hall, the visitor can take in a view of the Tama River, as well as of Mt. Fuji if the weather is clear. There are also several tours a year offering zazen meditation and yoga.



The Main Hall, was built in 1996 in the western corner of the temple's spacious grounds.  
The elegant and beautiful Fussa Kannon

613 Fussa, Fussa City 042-553-0083 8:00~17:00 Open daily year-round 10 minutes' walk from JR Fussa Station Parking available

MAP P.16 A-2

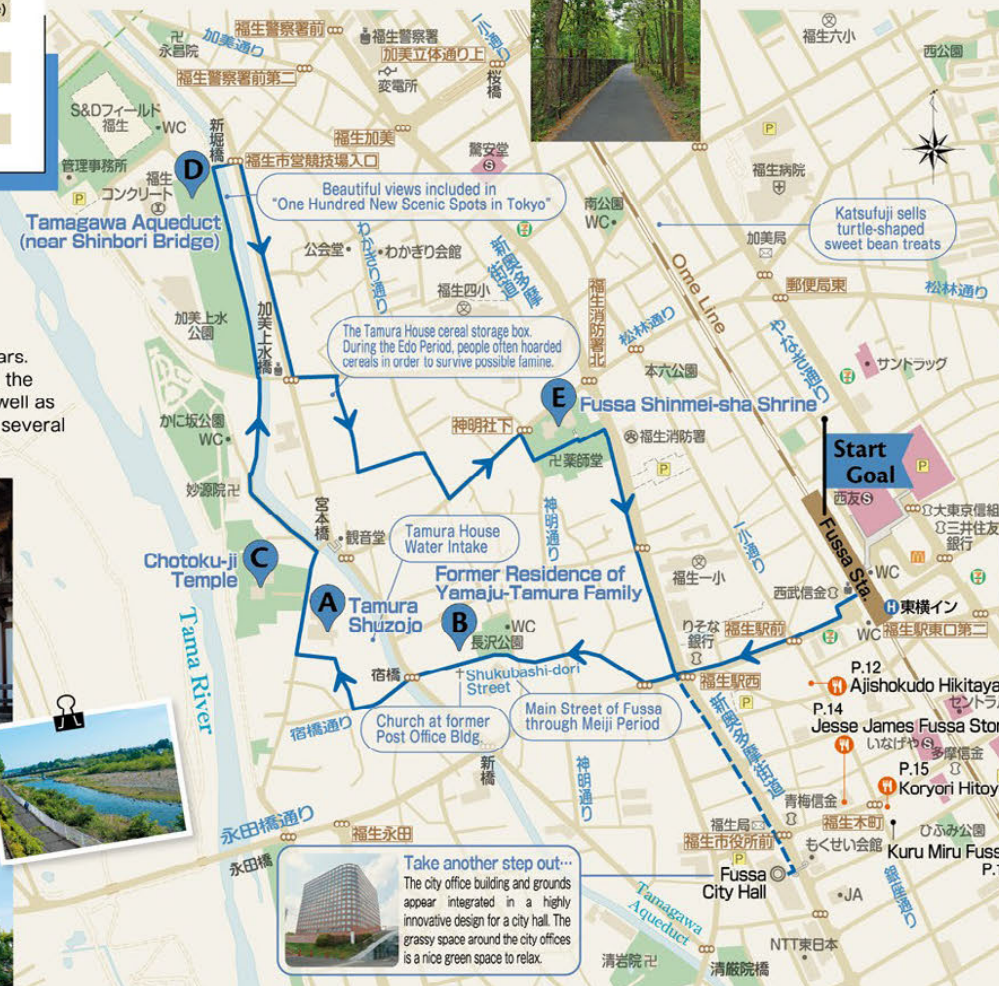


The main gate sits across from the Tamura Shuzojo brewery

#### D Waterway built during the Edo Period Tamagawa Aqueduct (near Shinbori Bridge)

This artificial waterway was built during the Edo Period to provide drinking water to the people of Edo. Located in the north of Fussa City, it flows roughly 43 kilometers from Hamura City to the area currently known as Yotsuya, from where it was distributed to Edo. To the present day, part of this system remains a waterworks facility managed by the Tokyo Metropolitan Government Bureau of Waterworks. This waterfront area surrounded by greenery is a favorite place for residents to relax.

15 minutes' walk from JR Fussa Station (to Shinbori Bridge) MAP P.16 A-1~C-4



#### E Local Shinto deities Fussa Shinmei-sha Shrine

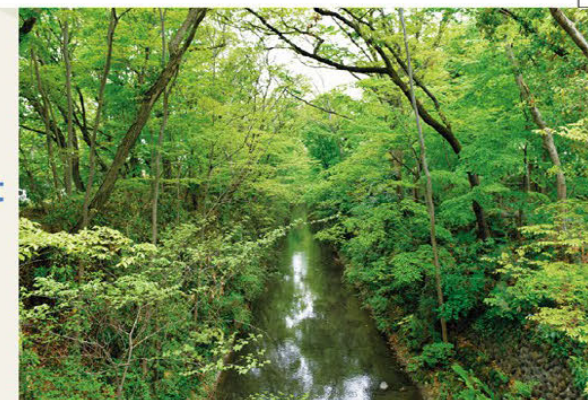
This temple, located along the Shin-Okutama Street, was built in 1874 to enshrine all of the deities of the local area. Proceeding through the stone torii gate and along the temple approach, you find the front shrine. The very dignified current shrine building was rebuilt in 1972. The subordinate Yakumo Shrine festival is a leading festival of Fussa City, showcasing many mikoshi portable shrines and floats.

1081 Fussa, Fussa City 042-551-4899 Pay your respects as you wish Open daily year-round 7 minutes' walk from JR Fussa Station No parking

MAP P.16 A-2



Believed to bring business and academic success



The Tamagawa Aqueduct is visible from the Shinbori Bridge. The cool waters flow all year round. Some areas have pedestrian walkways.





### Course 3 Recommended Fussa area walking courses

## History and Nature Walking Course

- Walking distance: Approx. 4.2 km
- Tour times: Approx. 2 hours and 45 minutes
- Time required: Approx. 55 minutes
- Walking course time: Approx. 3 hours and 45 minutes

This course is in a natural setting running through the Kumagawa watershed and the Tamagawa Aqueduct. It offers sake breweries and temples, where you can feel the history of the former village of Kumagawa.

The tour of the sake brewery held every month on Appreciation Days (the fourth Saturday, the Sunday following, and any holiday that comes after the Sunday) is very popular. The theme and content differ depending on the month. See the following website for details: (<https://www.tamajiman.co.jp/en/tour/>) Online reservations only.



Inside the main brewery (built in 1880)

Water used in the brewing process is pumped from a depth of 150m



A National Registered Cultural Property and Nishi-tama region's largest main brewery  
White-walled historic building



Benzaiten (water) and Daikokuken (rice) are honored at the base of the two large zelkova trees, known as the "husband and wife zelkova."



### A A walk along a sake-tasting theme park

## Ishikawa Brewery

This brewery was established as a Japanese sake brewery in 1863, at the end of the Edo Period. The brewery's famous sake, called Tamajiman, is made by hand using traditional methods. Beer brewing was launched at the facility during the Meiji Period (1868-1911), with labels such as Tama no Megumi and Tokyo Blues still brewed to this day. Visitors may use a map with QR codes to tour the grounds, or book a guided tour (reservations required). There are also shops and restaurants serving beer.

- 1 Kumagawa, Fussa City walk around the grounds
- 042-553-0100 (Weekdays 9:00-17:30)
- 10:00-20:00 (Visitors can walk around the grounds)
- Check hours/days closed ahead of time.
- 20 minutes' walk from JR Hajima Station
- Parking available
- MAP P.16 B-4



Scan here to make a reservation in English

English-language tours also available for foreign nationals (reservations required)



The store located in a renovated rice granary.

### Brewery-owned store Sakesera

At their Sakesera store, in addition to Japanese sake and beer, sweets, cosmetics, and more made from Japanese sake are also available for purchase.

- 042-530-5792
- 10:00-18:00
- Tuesdays (excludes December)



Daiginjo Cake, featuring the rich flavor of sake. Tamajiman ¥1,674

TOKYO BLUES Series (beer) ¥548 each

The goal at Ishikawa Brewery is to brew a sake that goes with every kind of food. Tamajiman Unfiltered Junmai is made with great-tasting rice. 720 ml ¥1,100



Indoor seating for 50

### Italian restaurant Fussa no Birugoya

The menu at this restaurant features lots of local ingredients. This place also offers seven types of beer as well as Japanese sake brewed by Ishikawa Brewery, plus wine and cocktails. There's also a lunch menu available on weekdays.

- 042-553-0171
- 11:30-20:30 (food), to 21:30 (for drinks)
- Mondays and Tuesdays

Ohtama Ham brand sausage combination plate, ¥1,400



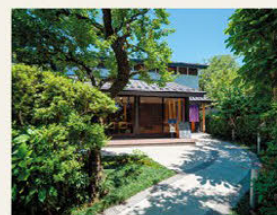
Terrace seating for 40  
Fresh-brewed beer (left: Pale Ale, right: Dunkel, ¥600 each)



### Japanese food SHOKUDO ISHIKAWA

They offer Japanese food that pairs well with Japanese sake and craft beer. In addition to fresh sashimi, they're also pleased to present cuisine featuring Tamajiman sake lees.

- 042-513-7020
- 11:30-14:30, 17:00-21:30 (Saturdays, Sundays, and holidays; 11:30-21:30)
- Wednesdays



### Guest house Shubou-Tamajiman

Private Japanese-style rooms as well as capsule beds (separate for men and women) are provided. The restaurant offers Japanese cuisine and sweets, as well as a sake-tasting set.

- 042-513-7448
- Private rooms from ¥14,000- (one or two people per room)/Capsule bed from ¥6,000 \*Lunch and dinner are available for visitors other than guests (closed Mondays)



### Course 3

#### Start Hajima Station

- 1.1km/Approx. 14 minutes
- Ishikawa Brewery
- 210m/Approx. 3 minutes
- Senju-in Temple
- 800m/Approx. 10 minutes
- Kumagawa Shrine
- 350m/Approx. 5 minutes
- Fukusho-in Temple
- 600m/Approx. 7 minutes
- Mizukuraido Park
- 1.1km/Approx. 14 minutes

#### Goal Hajima Station

### B The Tama River is visible from the temple grounds

## Senju-in Temple

This temple was built in 1615. On the temple grounds, adorned with a statue of Mercy Kannon Bodhisattva, chirping birds can be heard, and there tends to be a lovely river breeze flowing through. A group of 17 objects made of stone on the temple grounds are registered with Fussa City as a tangible folk cultural property.



- 20 Kumagawa, Fussa City
- 042-551-3062
- 8:00-17:00
- Open daily year-round
- 16 minutes' walk from JR Hajima Station
- Parking available
- MAP P.16 B-4

### C A soothing environment of water and greenery

## Kumagawa Shrine

This shrine, dating back to the early Heian Period, is known for the fact that all seven of the "lucky gods" are honored here. It is believed that those who pray at this shrine receive the luck bestowed by these seven gods.



- Next to the shrine water flows from the Kumagawa branch of the Tamagawa Aqueduct
- 660 Kumagawa, Fussa City
- 042-551-0720
- Pay your respects as you wish
- Open daily year-round
- 15 minutes' walk from JR Hajima Station
- Parking available
- MAP P.16 B-4

### D A history stretching back to the Muromachi Period

## Fukusho-in Temple

According to temple lore, Ashikaga Yoshimochi, fourth Ashikaga Shogun founded this temple in 1411. The Main Hall houses an image of Kokuzo Bodhisattva. There is also a statue of Senshin Doji, a Bodhisattva in the shape of a child with a broom, believed to help us purify our hearts.

- 716 Kumagawa, Fussa City
- 042-551-4478
- 8:00-17:00
- Open daily year-round
- 4 minutes' walk from JR Kumagawa Station
- Parking available
- MAP P.16 B-3



### E Ruins of a moat at the Tamagawa Aqueduct

## Mizukuraido Park

The name "Mizukuraido" means "soil that eats water." When the Tamagawa Aqueduct was first being excavated, no matter how much the workers dug, the gravelly layers continued to absorb water, which is how the park got its name. Traces of the moat remains to this day.

- 1359-1 Kumagawa, Fussa City
- 5 minutes' walk from JR Kumagawa Station
- No parking
- MAP P.16 C-3

Though the kanji characters are the same for the city and the temple, the temple name reads "Fukusho."



Visit the Kannon and the adorable Senshin Doji



## European-style cuisine

Company store owned by well-known ham manufacturer Ohtama Ham

### Stuben Ohtama

At this restaurant, customers are treated to the rare pork brand TOKYO-X. Enjoy some authentic original cuisine and home-style sausages, along with some wine or craft beer. Get Fussa dogs here, too! (→P. 14)



➡An oven-cooked dish of simmered-tilt soft TOKYO-X pork and bacon (dinner only) ¥2,530



➡Adjoining store on first floor ➡An open-space layout with an atrium



➡785 Fussa, Fussa City  
➡042-551-1325 ➡11:30~14:00/Saturdays, Sundays, and holidays until 15:00; 17:00~20:30  
➡Mondays and Tuesdays (the next day where a holiday falls on a Monday or a Tuesday) ➡3 minutes' walk from JR Fussa Station ➡Parking available  
MAP P.16 B-2

## Italian food

An Italian restaurant in former military housing

### Un Quinto

This restaurant is located in former U.S. military housing along Route 16. The handwritten English graffiti on the walls gives the place a stylish look. Menu options include handmade pasta, meat and fish dishes, and more—all of which are authentic.

➡2270-B15 Fussa, Fussa City  
➡042-552-6052 ➡11:30~15:00, 17:00~21:30 (Fridays, Saturdays, Sundays, and holidays until 22:00) ➡Wednesdays  
➡14 minutes' walk from JR Fussa Station  
➡Parking available  
MAP P.16 C-2



➡Find signatures of famous people on the wall



➡Using former military housing

➡Italian rice dish with fish and chicken in tomato sauce on saffron rice: ¥1,580

## Combination meal

Tasty-yet-inexpensive authentic cafeteria-style food

### Ajishokudo Hikitaya



➡Counter and table seating available  
➡Owner Mr. Tanaka perpetuates the tradition of his store, established more than 100 years ago



➡Mixed fried piece combination meal: ¥1,050. Combination meals are available in the evening a-la-carte at a ¥200 discount.

➡107 Honmachi, Fussa City ➡042-551-0218 ➡11:00~14:30, 17:00~20:50 ➡Sundays ➡2 minutes' walk from JR Fussa Station ➡Parking available  
MAP P.16 B-2

Fussa has lots of other great food to offer!

## Enjoy the Wide Variety Fussa Gourmet

There are many unique restaurants in Fussa, including former base housing-turned eateries as well as spots reminiscent of street-food establishments in Asian cities.

## Soba noodles

Try handmade soba noodles together with local sake

### shikoan

This soba noodle shop makes soba noodles with buckwheat flour carefully selected from around the nation. Known for its ultra-smooth texture, these noodles are highly aromatic with a touch of sweetness. There is also a sampler of Fussa local sake varieties available.



➡A sampler of Fussa sake including Kasen and more ¥990

➡Crispy tempura with soba noodles: a popular choice ¥1,628

➡68 Shimo, Fussa City ➡042-551-2843 ➡11:30~14:00, 17:00~20:30  
➡Tuesdays and Wednesdays ➡5 minutes' walk from JR Ushihama Station ➡Parking available  
MAP P.16 B-2

➡Tucked away in a residential area

## Chinese food

Shop where the *nira manju* was first created

### NIRAMANJU Fussa

This restaurant is the originator of the *nira manju* (leek buns) in Japan. These buns are made by mixing leeks and shrimp. The mix is then wrapped by hand in the dough. The buns are first boiled and then fried—and the result is crispy outside and fluffy inside.



➡A charming sign

➡A restaurant with a distinctively Chinese atmosphere ➡Original *nira manju*: ¥319 each, takeout is available for orders of two or more.

➡2218 Fussa, Fussa City ➡042-553-0177 ➡11:30~14:30 and 17:00~21:00 (Fridays, Saturdays, Sundays, and holidays until 21:30)  
➡Mondays (the next day where a holiday falls on a Monday)  
➡5 minutes' walk from JR Higashi-Fussa Station ➡Parking available  
MAP P.16 C-2



## Japanese food

Locally produced-and-consumed kaiseki cuisine served in individual rooms

### Ryotei Korakuen

➡Featuring carefully-selected ingredients including fish and vegetables from the Nishi-Tama area—they taste as good as they look! ➡All private rooms, both tatami room and tables available



This traditional, well-established shop, first opened in 1951, boasts an executive chef with a history of winning several prizes. In addition to seasonal kaiseki, there are also lunchtime courses (¥2,750-) available on weekdays at reasonable prices. Reservations required.

➡1018 Kumagawa, Fussa City ➡042-551-0035 ➡10:00~21:30 ➡Open daily year-round ➡5 minutes' walk from JR Kumagawa Station ➡Parking available  
MAP P.16 B-3



➡Domestic-brand eel and sashimi assortment lunch course ¥3,300  
➡Spacious Japanese gardens offer a wonderful display of the four seasons throughout the year

## Thai food

A popular base-side street spot

### Khao man gai R16

This restaurant is located in front of Yokota Air Base. Look for the blue three-wheeled tuk-tuk! It's just like visiting an outdoor food stand in Thailand. At lunch, reasonably-priced combination meals are a popular draw. Even the outside tables are packed!



➡Former U.S. military housing renovated into a restaurant

➡2270 Fussa, Fussa City ➡042-530-2355 ➡Monday-Friday 11:30(11:00 in winter)~14:30, 17:00~22:00 (21:30 in winter), Saturdays, Sundays, and holidays: 11:30~22:00 (11:00~21:30 in winter) \*Winter season is from November to April ➡Open daily year-round ➡7 minutes' walk from JR Higashi-Fussa Station ➡Parking available  
MAP P.16 C-2



➡Faces National Route No. 16  
➡Hainanese chicken rice: boiled chicken in rice cooked in chicken stock ¥968

## Ramen noodles

People line up for the must-try tomato ramen

### Kappa 64

Their tomato ramen—one of their staples—is made with seafood and pork bone broth, which create a wonderful *umami* flavor together with the tomatoes. You'll be hooked! Once you're done with the noodles, put cheese and rice in the remainder of the soup for a risotto-like creation.



➡A modern atmosphere with 12 seats



➡A popular store establishment frequented not only by locals but people from around the nation.

➡1-6-9 Kitaden-en, Fussa City ➡042-553-8449 ➡11:00~15:00, 17:00~20:45 ➡Open daily year-round ➡15 minutes' walk from JR Ushihama Station ➡Parking available  
MAP P.16 B-3



➡Tomato ramen with two kinds of roasted pork ¥880



## Stuben Ohtama

### They're proud of their in-house sausage and bacon!

Enjoy at Ohtama Ham restaurant. In addition to sausage, this dish also features a strip of their slow-smoked in-house bacon. Takeout also available.



⑦85 Fussa, Fussa City ④042-551-1325  
①1:30~14:00 (Saturdays, Sundays, and holidays until 15:00), 17:00~20:30 ②Mondays and Tuesdays (the next day where a holiday falls on a Monday or a Tuesday)  
③3 minutes' walk from JR Fussa Station ④Parking available  
MAP P.16 B-2



④Featuring aromatic soft French bread baked to perfection (¥880/¥864)

## Ki wo Ueru Restaurant Aurora

### The secret is in their special spicy sauce!

Since all dishes are hand-made to order, it comes piping hot! They offer Mexican style, featuring their special chili beans and cheddar cheese. The buns are soft bread baked using natural yeast.



②477 Fussa Ninomiya, Fussa City ④042-539-4139  
①11:30~14:00, 18:00~21:00 ②Mondays (the next day where a holiday falls on a Monday)  
③12 minutes' walk from JR Ushihama Station ④No parking  
MAP P.16 C-2



④An extra-volume dish piled high with chili beans and cheddar cheese (None/¥864)

## Rules of the FUSSA DOG



More restaurants now offering Fussa dogs!  
Latest restaurant information available on official Website



FUSSA DOG 福生ドッグ

Eat-and-compare Fussa dogs!

# FUSSA DOG

The Fussa Dog is a unique kind of hot dog. It always features either Ohtama Ham or Fussa Ham brand sausage on original buns and sauces made at each location. It's very popular with tourists!



④A simple sauce that brings out the flavor of the bread (¥660-/¥770-)

## Kochido Cafe Sen-no-haru

### Bringing their customers the best bread!

Choose from five different varieties of bread, from hard French-country-style bread to bagels. The dough is infused with orange confit, gorgonzola cheese, honey, and more.



③3-40-1 Kamidaira, Fussa City ④042-533-5585  
①11:30~15:00 ②Tuesdays and Sundays  
③13 minutes' walk from JR Fussa Station ④Parking available  
MAP P.16 A-1



④Lunch includes salad, soup, and a drink. Lunch (¥900/¥600), Dinner (¥1,000/¥600) plus a cover charge

## Jesse James Fussa Store

### Their specialty chili con carne is the sauce for their hot dogs!

Their sauce is a chili con carne made with beef, vegetables such as tomatoes, and hot peppers. Their Fussa Ham brand sausage is a perfect match for their in-house baked breads with sesame and their spicy sauce.



④WAKOHRE Fussa 106, 72-2 Honcho, Fussa City ④050-6869-5169  
①12:00~13:00 (weekdays only), 17:00~22:00 \*A cover charge will be applied in the evening ②Saturdays during lunchtime, Sundays ③5 minutes' walk from JR Fussa Station ④No parking  
MAP P.16 B-2

## Koryori Hitoyo

### Japanese-style taste

This is a Japanese-style hot dog. The bun is topped with a special in-house onion miso, perilla leaf, sesame, and ground nori seaweed. Great with Japanese sake! Open for dinner only.



②23 Honcho, Fussa City ④042-530-7959 ①17:00~22:30  
②Mondays ③5 minutes' walk from JR Fussa Station ④No parking  
MAP P.16 B-2



④Their sweet-flavor onion miso increases the appetite! (¥660/¥600)

## Cafe de Noel

### A perfect harmony of sweet-and-sour

Featuring two sausages, this dish is for the hungry customer! The slow-sauteed onion topping and special sausages make this dish a favorite. See the live music schedule for weekend nights: <https://www.noel-note.com/>



②049 Fussa, Fussa City ④090-4744-0773 ①14:00~19:00  
②Mondays, Tuesdays, and Wednesdays (closed on occasion)  
③2 minutes' walk from JR Higashi-Fussa Station ④No parking  
MAP P.16 C-1



④Fussa hotdogs available only from 14:00-19:00, reservations required (¥880/None)

## Fresh Bagels Café Hoop

### A hotdog where you can truly taste the individual ingredients

The Fussa Dog bun for this shop is an original baguette. The delicious flavor of the ingredients really comes through with this simple hot dog, featuring only Fussa Ham brand sausage and lettuce.



②2475 Fussa, Fussa City ④042-530-8877  
①8:00~17:30 ②Open daily year-round  
③10 minutes' walk from JR Ushihama Station ④Parking available  
MAP P.16 C-2



④Take in the aroma of their original baguettes (¥780/¥780)

## Live Music Cafe UZU

### A hot dog for a live music club!

This authentic hot dog is made with their own bread baked in-house using Japanese-grown wheat flour and sausage. This club has been a launching pad for many big acts. See the music schedule as follows: <https://uzu69.com/>



①1-3-12 Musashinodai, Fussa City ④042-551-4477 ①11:00~14:30, 20:00~23:00  
②Mondays, Saturdays, and Sundays daytime/ Monday and Tuesday nights  
③3 minutes' walk from JR Higashi-Fussa Station ④Parking available  
MAP P.16 B-1



④Takeout only during daytime hours: (¥700/¥600)

## Shirouta Cafe

### Choose from three kinds of hot dogs

Try their different hotdogs: plain made with Fussa Ham and tomato-and-cheese flavor made with Ohtama Ham. Note that the entire restaurant may be rented out for events on weekends, so please check on SNS.



④Medical Beans 2F, 158 Ushihama, Fussa City ④090-6000-3908 ①12:00~20:30 (Saturdays and Sundays until 19:00) ②Thursdays (closed on occasion) ③2 minutes' walk from JR Ushihama Station ④Parking available  
MAP P.16 B-2



④Served fresh out of the toaster! Twin dogs with different sausages. (¥800/¥800)

Food truck offering the popular Fussa dog

## Bread Garden

Their salsa sauce, crafted in-house, is savory and only mildly spicy. Pair it with cream cheese to bring out the flavor of the sausage. And toast the bun for a very satisfyingly crispy texture!



④Offering made-to-order piping hot Fussa dogs served with their own special salsa sauce (None/¥400-)  
④090-3500-3823 / ④042-553-7234





The first place to visit when you come to Fussa City!



### Fussa City Tourist Information Center

### Kuru Miru Fussa

- 23 Honcho, Fussa City
- 042-530-2341
- 10:00~18:00
- Mondays and Thursdays (open where a holiday falls on these days, closed the next day instead)
- 5 minutes' walk from JR Fussa Station
- Parking available (for one car only)
- <https://www.kurumiru-fussa-omotenashi.com/>
- MAP P.16 B-2



Kuru Miru Fussa  
Official Instagram



SKURUMIRUFUSSA



Fussa City Media  
Laboratory



Published by

City Sales Promotion  
Section, Living  
Environment  
Department, Fussa City  
〒197-8501  
5 Honcho, Fussa City, Tokyo  
TEL: 042-551-1740  
<https://www.city.fussa.tokyo.jp>

Produced by

Shobunsha  
Publications, Inc.  
Issued September 2023